

# Workforce Development Research @ The Jacob France Institute

<http://www.ubalt.edu/jfi>

Ting Zhang, PhD  
Jacob France Institute  
Merrick School of Business  
University of Baltimore  
Email: [tzhang@ubalt.edu](mailto:tzhang@ubalt.edu)  
Phone: 410-837-6551

## **Paper A—Economic Cycle Effect on Training Program Performance**

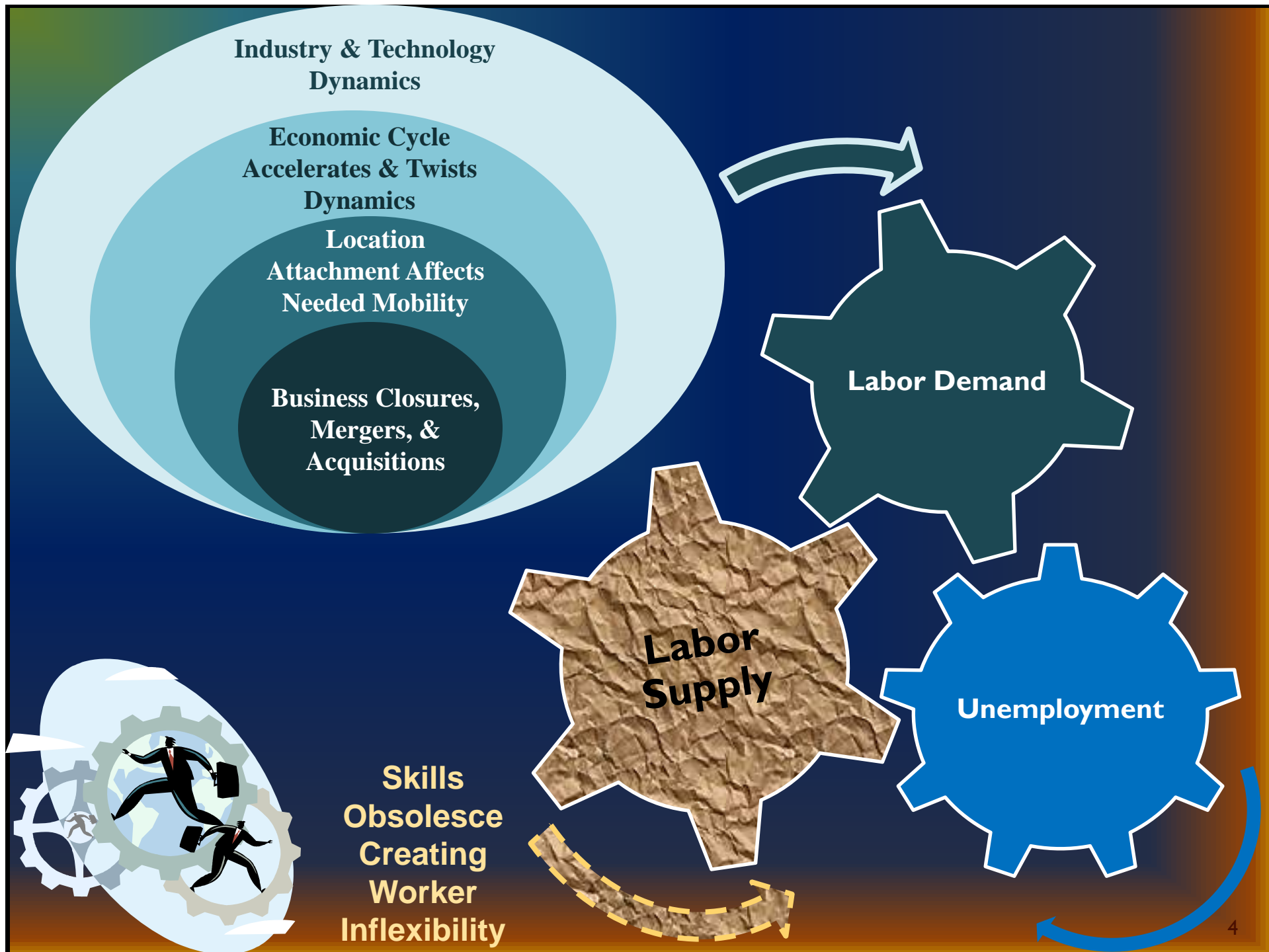
### **PY 2008 & PY 2009 WIA TITLE IB COMMON MEASURES PERFORMANCE EXPECTATIONS: A TWO-CYCLE HISTORICAL PERSPECTIVE 1990-2007**

- ❖ 2-cycle: 1990-2007, quarterly
- ❖ MD, 4 sub populations
- ❖ EER, ERR, AE,  $f(U, t)$
- ❖ JTPA (Pit, Pip), WIASRD, UI wage records
- ❖ Time series
- ❖ Strong, negative effect
- ❖ forecast
- ❖ Wagner-Peyser

# Preparing Today's Workers for Tomorrow's Jobs

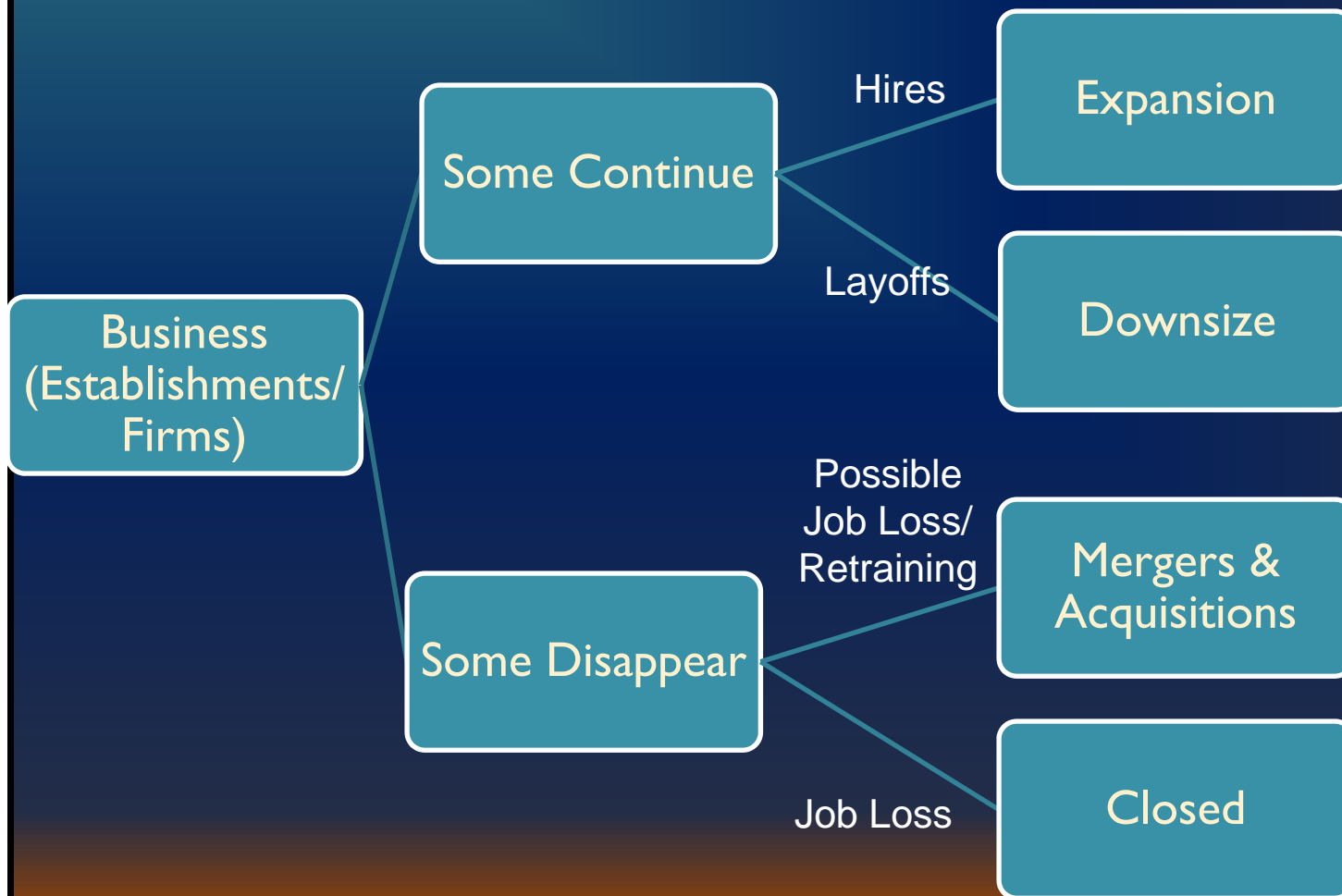
- **Worker flexibility/ adaptability**
  - Industry dynamics
  - Technological change
  - **Business closures, mergers, and acquisitions (JFI focus)**
- **Federally funded training programs**
  - WIA participants benefit from the program on average, though with uneven quality (Heinrich, Mueser, and Troske, 2008)
  - Could be more effective and need to improve accountability

Source: Council of Economic Advisers, July 2009



**Employment  
Training  
Needed!**

**Technological  
Change;  
Adjusted  
Product/Services  
Offered**



## **Paper B—Establishment, Industry & Location Effects**

### **Government Employment Investment Strategy through a Recession: Prioritize New Businesses or Existing Businesses?**

- ❖ **Establishment characteristics**
- ❖ **Industries**
- ❖ **Location**
- ❖ **Local economic environment**
- ❖ HLM, IV, SUR, temporal & spatial effects
- ❖ Innovative measures of local economic conditions
- ❖ QCEW, BLS, Census, 2004 Jan-2008 Sep (for the paper so far)

## Illustration of Business Establishment Dynamics, 2004q1 vs. 2008q3

2004q1  
Establishments:

12633

7783 (62%)  
(same ownership in 2008q3)

4850 (38%)

Closed,  
Merged, or  
Acquired

2008q3  
Establishments:  
Total **13606**  
Establishments

7783 (57%)

Created

5823 (43%)

Establishment  
Net Gain,  
2008q3  
vs.2004q1

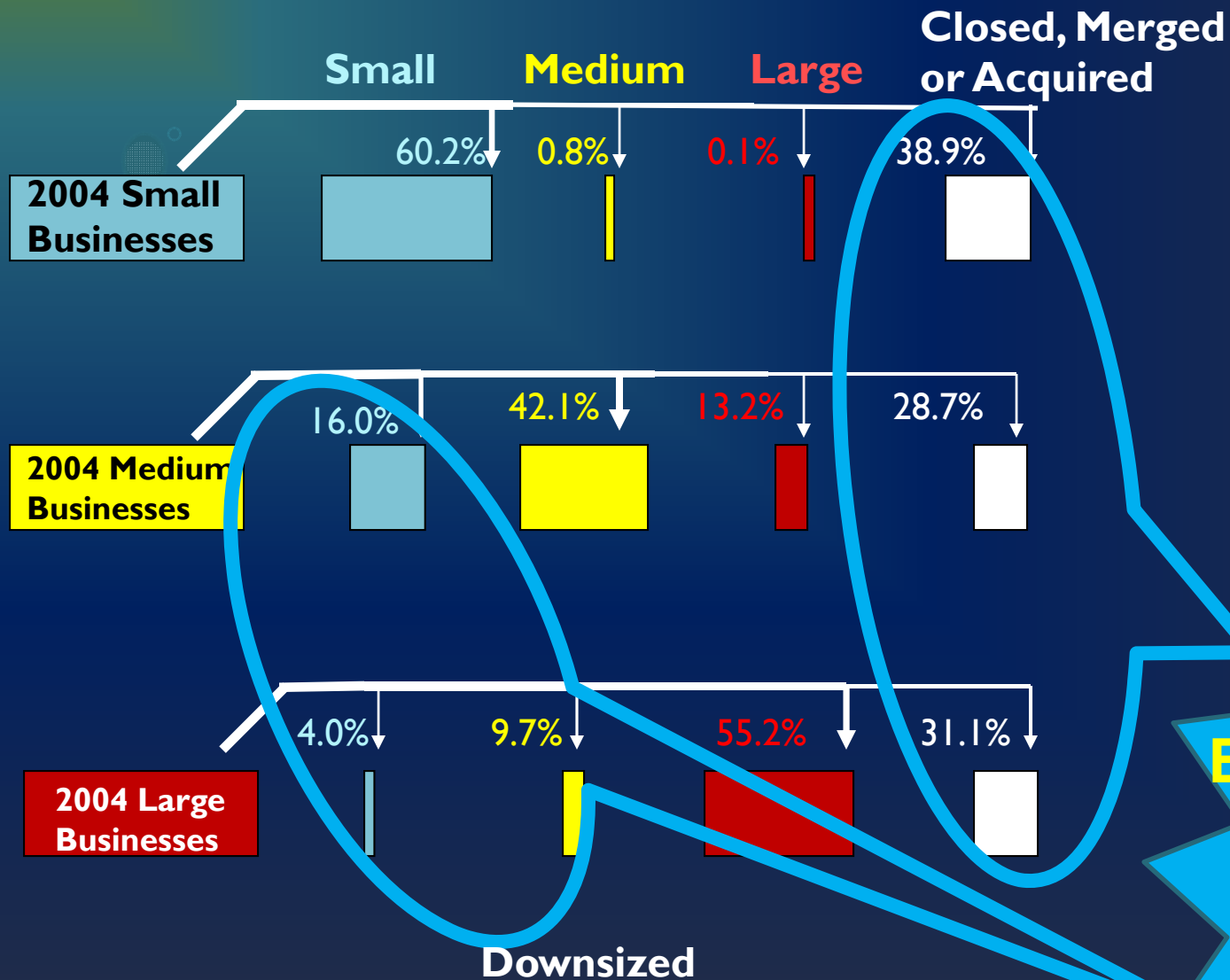
Net Gain

973  
(7.2%  
of 13606)

**Employment  
Training  
Needed!**

The Jacob France Institute  
Data received from the Maryland Department of Labor, Licensing & Regulation

## 2008 Business Establishments



The Jacob France Institute  
Data received from the Maryland Department of Labor, Licensing & Regulation



# Systematic Workforce Development Research Capacity @ The Jacob France Institute

- Targeting **where** and **to whom** workforce training is needed:
  - Historical, Local, Industry, Establishment/Firm, Education/Training, Demographics
- Sustained access to **linkable** administrative data files:
  - **“Full” QCEW**
  - **MD UI wage records**
  - **Other nearby states’ UI wage records (TRADE)**
  - **FEDES records**
  - **WIA records**
  - **Community college student records**
  - **University System of Maryland student records**
  - **Maryland high school student records (selected)**
- ADARE project partnership across states



# Thank you!

- Questions & Comments?
- Please contact
  - [tzhang@ubalt.edu](mailto:tzhang@ubalt.edu)
  - 410-837-6551
  - <http://www.ubalt.edu/jfi>